

Primary education in Ninove

DISCOVER OUR NURSERY AND PRIMARY SCHOOLS!





In Ninove you can choose from 14 primary schools. Every school in Ninove has the best in mind for your child and is committed to a good collaboration with the parents. With this brochure, we will help you make the best choice.

You will also receive suggestions for monitoring, motivating, and supporting your child. It also includes a list of services you can turn to with all your questions. We wish you and your child a good start!



Table of content

	Which schools are there in Ninove?	4
	When can my child start attending school?	8
	How do I enrol my child?	9
	What does the school expect from me as a parent?	10
	Which language do we speak at school?	11
	How much does school cost? Am I entitled to allowances?	12
	Do you have any other questions?	13



Which schools are there in Ninove?

CITY PRIMARY SCHOOLS

All city primary schools are part of the GeNi school community (Ninove Municipal Schools)

1. De Oogappel

Appelterre-dorp 48
9400 Appelterre-Eichem
Tel. 054 32 15 89



www.sbsdeoogappel.be



appelterre@sbsninove.be



7:00 - 17:30, WE 7:00 - 12:05



Only to en from
IBO Kadeeken

4. De Hazelaar

Geraardsbergsesteenweg 184
9400 Nederhasselt
Tel. 054 32 20 16



www.sbsdehazelaar.be



dehazelaar@sbsninove.be



7:00 - 17:30, WE 7:00 - 12:05



2. Windekind

Edingsesteenweg 344
9400 Denderwindeke
Tel. 054 33 51 97



www.sbswindekind.be



slsdenderwindeke@telenet.be



7:00 - 18:00, WE 7:00 - 12:25



5. Ikke (kleuterschool)

Parklaan 11
9400 Ninove
Tel. 054 33 22 36



www.sksikke.be



ikke@sbsninove.be



7:00 - 17:30, WE 7:00 - 12:20



3. De Flapuit

Geraardsbergsesteenweg 609
9400 Voorde
Tel. 054 50 03 84



www.sbsdeflapuit.be



voorde@sbsninove.be



7:00 - 17:30, WE 7:00 - 12:05



6. De Lettertuint

Seringenstraat 22
9400 Ninove
Tel. 054 33 61 66



www.delettertuinninove.be



lettertuin@sbsninove.be



7:00 - 17:30, WE 7:00 - 12:05



Warm
meals



School
bus



Opening hours school
(before and after school care
is to be paid)

GO! FLEMISH COMMUNITY SCHOOLS

7. De Wonderwijzer

Kapellestraat 2
9402 Meerbeke
Tel. 054 33 42 99



www.bsmeerbeke.be



directie@bsmeerbeke.be



6:45 - 18:00, WE 6:45 - 17:00



8. De Kameleon

Dreefstraat 33
9400 Ninove
Tel. 054 33 32 32



www.basisschooldekameleon.be



secretariaat@basisschooldekameleon.be



7:00 - 18:00, WE 7:00 - 17:30



HARTENCOLLEGE PRIMARY SCHOOLS

All catholic primary schools are a part of Hartencollege Ninove

9. Hartencollege Okegem

Okegem-dorp 2
9400 Okegem
Tel. 054 32 60 65



bok.hartencollege.be



info.bok@hartencollege.be



7:00 - 17:30, WE 7:00 - 14:00,
FR 7:00 - 17:00

12. Hartencollege Aspelare

Plekkeersstraat 7
9404 Aspelare
Tel. 054 32 27 54



bas.hartencollege.be



info.bas@hartencollege.be



7:00 - 18:00 every school day



10. Hartencollege Onderwijslaan

Onderwijslaan 8
9400 Ninove
Tel. 054 31 06 65



bon.hartencollege.be



info.bon@hartencollege.be



7:00 - 18:00, WE 7:00 - 13:30



13. Hartencollege Meerbeke

Nieuwstraat 2 Donkerstraat 45
9402 Meerbeke 9402 Meerbeke
Tel. 054 33 20 49 Tel. 054 33 37 45



bme.hartencollege.be



info.bme@hartencollege.be



6:30 - 18:00, WE 6:30 - 13:00



11. Hartencollege Weggevoerdenstraat

Weggevoerdenstraat 55
9400 Ninove - Tel. 054 31 74 95



bwe.hartencollege.be



info.bwe@hartencollege.be



7:00 - 18:15, WE 7:00 - 12:30



14. Hartencollege BULO

Sint-Jorisstraat 45
9400 Ninove
Tel. 054 33 70 26



bulo.hartencollege.be



info.bulo@hartencollege.be

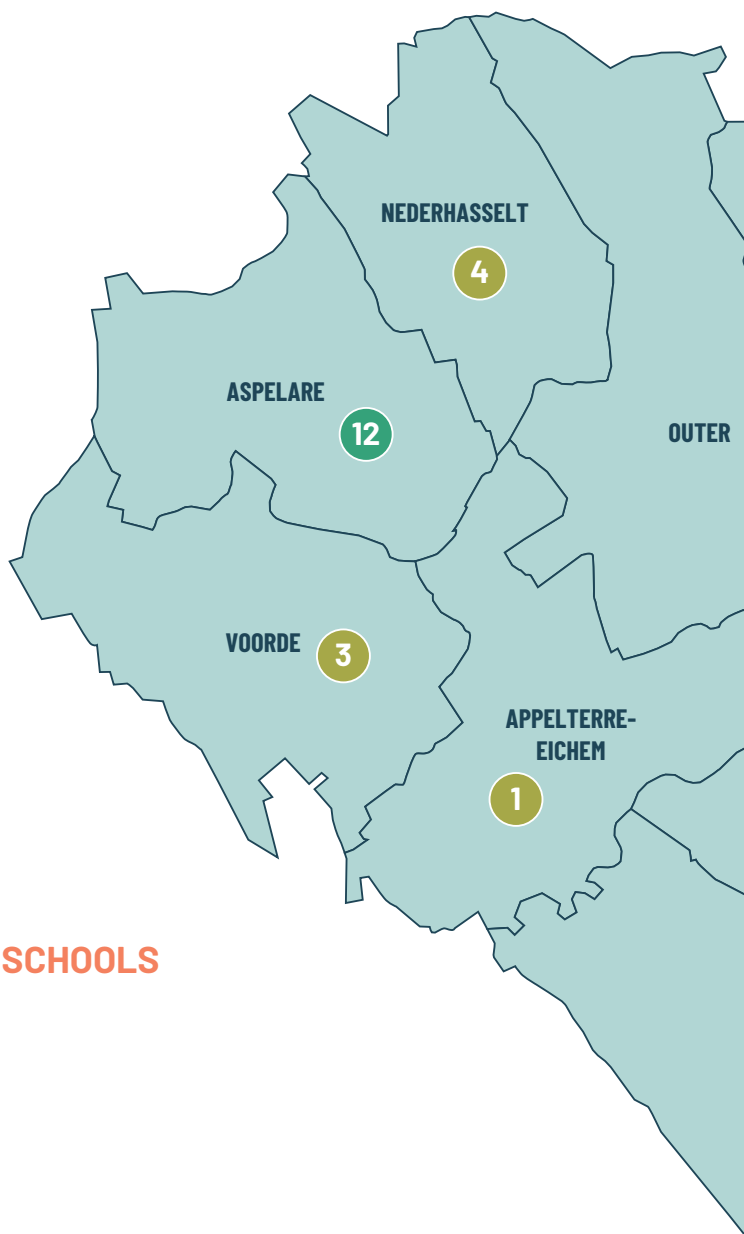


8:15 - 15:15, WE 8:15 - 12:05



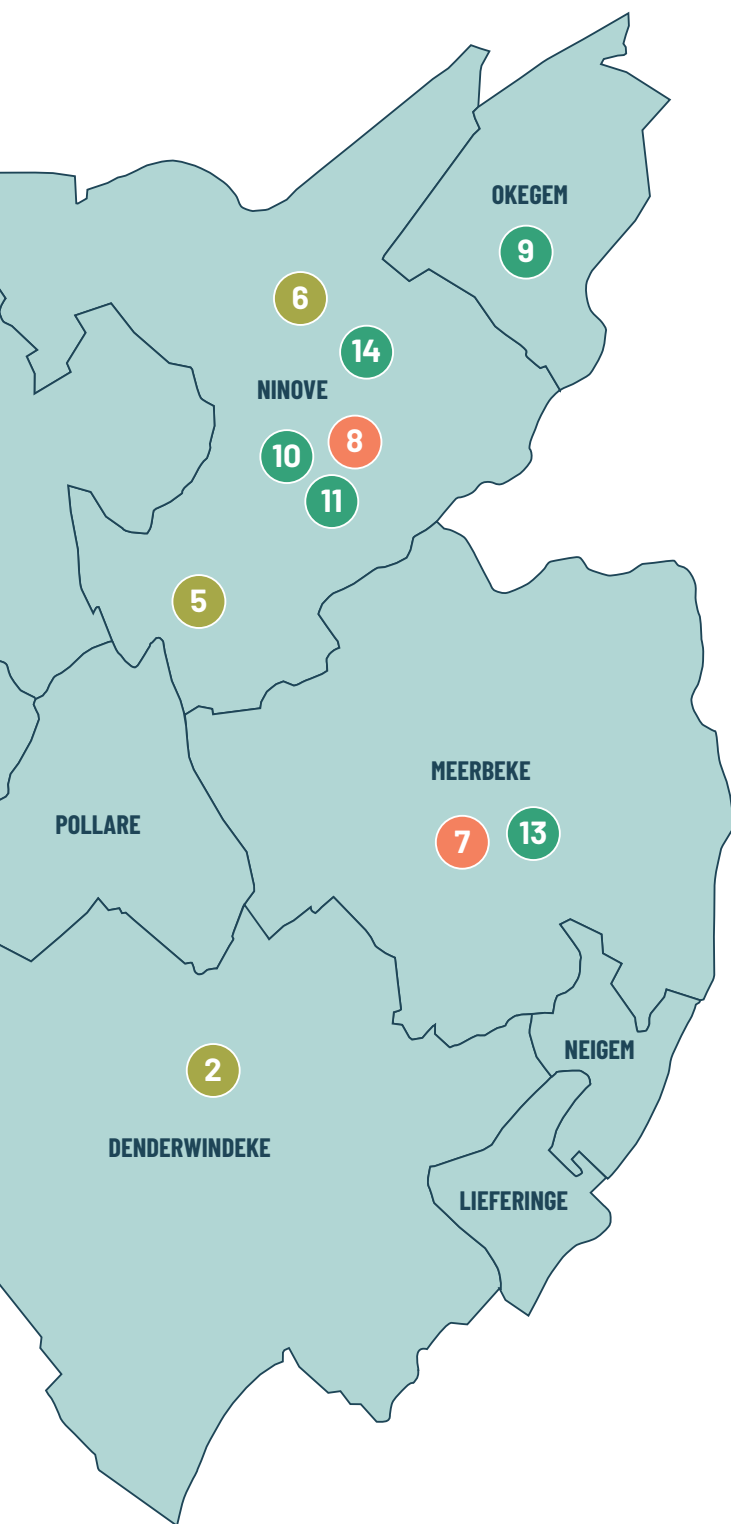
CITY PRIMARY SCHOOLS

- 1. De Oogappel**
Appelterre-dorp 48
9400 Appelterre-Eichem
- 2. Windekind**
Edingsesteenweg 344
9400 Denderwindeke
- 3. De Flapuit**
Geraardsbergsesteenweg 609
9400 Voorde
- 4. De Hazelaar**
Geraardsbergsesteenweg 184
9400 Nederhasselt
- 5. Ikke (kleuterschool)**
Parklaan 11
9400 Ninove
- 6. De Lettertuint**
Seringenstraat 22
9400 Ninove



GO! FLEMISH COMMUNITY SCHOOLS

- 7. De Wonderwijzer**
Kappellestraat 2
9402 Meerbeke
- 8. De Kameleon**
Dreefstraat 33
9400 Ninove



CATHOLIC PRIMARY SCHOOLS

- 9. Hartencollege Okegem**
Okegem-dorp 2
9400 Okegem
- 10. Hartencollege Onderwijslaan**
Onderwijslaan 8
9400 Ninove
- 11. Hartencollege Weggevoerdenstraat**
Weggevoerdenstraat 55
9400 Ninove
- 12. Hartencollege Aspelare**
Plekkersstraat 7
9404 Aspelare
- 13. Hartencollege Meerbeke**
Nieuwstraat 2
Donkerstraat 45
9402 Meerbeke
- 14. Hartencollege BULO**
Sint-Jorisstraat 45
9400 Ninove



When can my child start attending school?

On this website <https://onderwijs.vlaanderen.be/nl/bereken-de-instapdatum-voor-je-kleuter> you can see when your child can start attending school (or scan the QR code).



Toddlers from 2,5 years

Is your child **2,5 years** old? Then it can attend nursery school.

Your child can start school on the **1st school day after these holidays:**

- After the summer holidays
- After the autumn break
- After the Christmas holidays
- After the spring break
- After the Easter holidays

Your child can also start school on:

- 01 February
- after Ascension Day

Nursery school is important!

Nursery school is the ideal base to prepare for primary school. There, your child will learn:

- Language: talk, listen, ask and answer questions
- To observe a firm day schedule
- New things such as singing, dancing, walking, jumping, climbing, rolling.
- To socialise: playing together and learning from and with other children
- To be potty trained. Your child does not have to be potty trained to start nursery school. Communicate with the teacher on potty training, so that the class style training can be continued at home.

Toddlers from 3rd year nursery school

In 3rd-year-nursery school the children **must** attend school **at least 290 half days**.

Did your child attend school less than 290 half days?

- Then your child **cannot** start in 1st grade
- You **can** lose the school allowance. The school allowance is an annual financial support for low-income families with school-age children. The school allowance is granted automatically.

Do you want more information?

You will find it here: <https://www.Groeipakket.be/tegemoetkomingen/schooltoeslag>





Enrolling your child at school: how is it done?





What does the school expect from me as a parent?

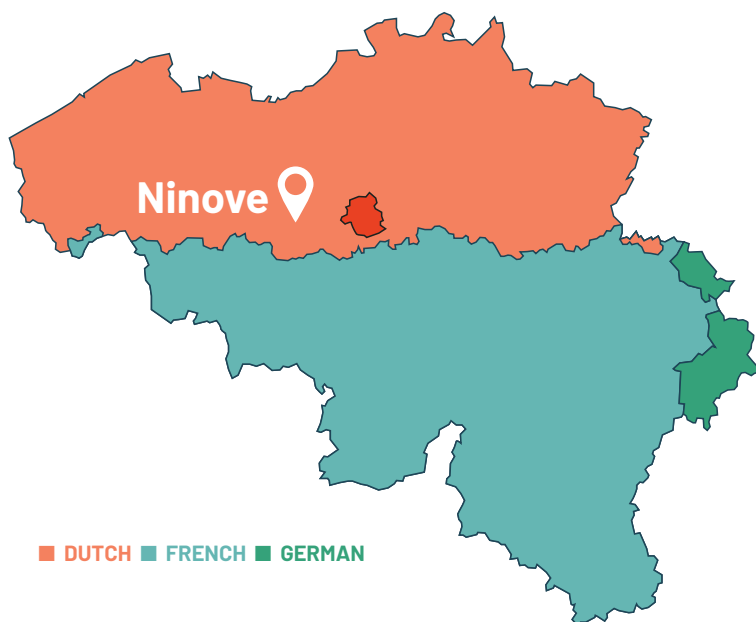
The school will collaborate with you on your child's school career. This way your child will feel good at school and as a parent you will know how your child is doing.

- **Every day** your child will learn something new at school. Therefore, it is important that your child attends school every day. It is also the best way for your child to become accustomed.
- During the morning welcome, the teacher tells the children what they will be doing that day. Make sure your child arrives **on time** or they will miss this important piece of information.
- Make sure your child does their **homework every day**. This way your child practices what they have learned in class that day. You should not help with homework. Is the homework too difficult? Let the teacher know, and your child will receive extra clarification in class.
- **Parent-teacher contact:** From time to time, the school will invite you to a parent-teacher contact. Please do attend. Your child's teacher will tell you how your child is doing at school. You can also share things with the teacher or ask questions about your child.
- The school also organises **information evenings** and **activities**. Every parent is welcome! Not only will you receive extra information, but it is also good to get to know your child's school better.
- Check the agenda **every day**.
- Read the **online communication** (smartschool, Facebook, website...) **every day**. The school uses them to post important information. Do you have difficulties using the online applications? Feel free to ask the school for help, they will be happy to help you.
- Make sure your child takes **lunch and a drinking bottle filled with water** to school **every day**.
- Give your child a **biscuit and a piece of fruit** to school **every day**.
- **Talk** to your **child** about their day at school.
- The **school manager**, the **care coordinator** and your **child's teacher** are important persons at school. They are there to help your child as best they can. Do you have any questions? Are you worried? Do not hesitate to contact them, they will be more than happy to help you.



Which language do we speak at school?

Ninove is a city in the province of East Flanders. We speak **Dutch** in our schools.



Note!

The school likes talking to you about your child. Do you not speak Dutch well enough? Ask the school how best to communicate with them.



How much does school cost? Am I entitled to allowances?

The lessons and materials are **free of charge**.

The school applies a '**maximum invoice**' principle.

At enrolment or at the start of the school year, the school will **communicate** what the **expected costs** are. The school may not exceed that amount. The amount is regularly indexed.

The target cost for the 2021-2022 school year is €45 for nursery school, €90 for primary school, **per school year**.

The exact amount of the maximum invoice and the list of free materials can be found here: <https://onderwijs.vlaanderen.be/nl/ouders/kosten-en-schooltoelagen/wat-kost-naar-school-gaan/in-het-kleuter-en-lager-onderwijs/schoolkosten-maximumfactuur-en-bijdrageregeling-in-het-kleuter-en-lager-onderwijs>.



Are you having a tough time paying this?

School allowance

Do you have a low income? You will automatically receive your school allowance by means of the FONS Groeipakket (growth package). FONS' contact details can be found on page 15 of this brochure.

UiTPAS with opportunities tariff

Do you have a low income? With the UiTPAS with opportunities tariff you get a discount on:

- Leisure activities
- Compulsory school activities.
- School invoices. If you are entitled to an UiTPAS with opportunities tariff, you can also apply for financial support from the Social House for, among other things, school invoices.



Where do you apply for an UiTPAS?

- Through the **Social House** if you have an ongoing file.
Burchtstraat 46
9400 Ninove
Tel. 054 50 50 50
- Through **Teledienst** if you do not have an ongoing file at the Social House.
Oude kaai 11
9400 Ninove
Tel. 054 32 24 54



Do you have any other questions?

Huis van het Kind *(House of the Child)*

Burchtstraat 46

9400 Ninove

Tel. 054 50 50 50



www.sociaalhuisninove.be/huis-van-het-kind



huisvanhetkind@ninove.be



(Future)parents and children can turn to the House of the Child for everything related to parenting and growing up.

They regularly organise workshops, information evenings and activities for parents and/or children. This is what the House of the Child has on offer:

- Speelodroom: Here you can borrow toys for free.
- Practical support e.g., when registering for a playground or other leisure activities.
- Childcare desk: all childcare related questions.
- De Mangel: swap shop for clothing up to size 164 and shoes up to size 32.
- Brabbeltabbels: Conversation group on parenting for pregnant women and parents with children up to the age of 3.

Kadeeken Out-of-school-hours childcare

Parklaan 13a

9400 Ninove

Tel. 054 34 23 02



www.sociaalhuisninove.be/buitenschoolse-opvang



kadeeken@ninove.be





Childcare outside school hours for children aged 2,5 to 12: before and after school hours, on Wednesday afternoons, during school holidays and on school-free days.

Before your child can go to 't Kadeeken, you must generate an online file first and go there for a guided tour. Make an appointment in advance.

Centrum voor Leerlingenbegeleiding (*pupil guidance centre*)

CLB City schools and Hartencollege



Kluisweg 13
9400 Ninove
Tel. 054 33 90 19

 www.clbninove.be
 ninove@clbninove.be



CLB GO! Community education

Zonnestraat 25
9300 Aalst
Tel. 053 60 32 80

 www.clbaalst.be
 directie@clbaalst.be



Here you can ask questions related to:

- Learning and studying
- Study choice and fields of study
- Mental and social functioning
- Preventive health care

Teledienst Hand in Hand for equal opportunities

Oude kaai 11
9400 Ninove
Tel. 054 32 24 54

 www.teledienstninove.be
 info@teledienst-ninove.be



You can contact Teledienst for:

- Social restaurant
- Chat cafe
- Social grocery shop
- UitTPAS with opportunities tariff

Groeipakket (growth package)

Burchtstraat 46
9400 Ninove
Tel. 078 79 00 07

 www.fons.be



The Groeipakket is the former child benefit. If you have a low income, you may also be entitled to a school allowance. Do you have any questions? Please contact FONS, the Flemish government agency paying the Groeipakket. Even if you receive the Groeipakket through another provider, you can consult them at their office:

- Every 2nd Thursday of the month from 09:00 through 12:00.
- Every 4th Thursday of the month from 16:00 through 19:00.
- No appointment required.

Learning Dutch

Do you do want to learn to speak Dutch?

Make an appointment with the Agentschap voor Integratie en Inburgering (Social and Civic Integration Agency)

Social House
Burchtstraat 46
9400 Ninove
Tel. 02 701 75 00

 <https://integratie-inburgering.be/nl/contactpunt-ninove>

 ninove@integratie-inburgering.be

AGENTSCHAP
**INTEGRATIE &
INBURGERING**



Sociaal Huis Ninove

Do you want to practise your Dutch?

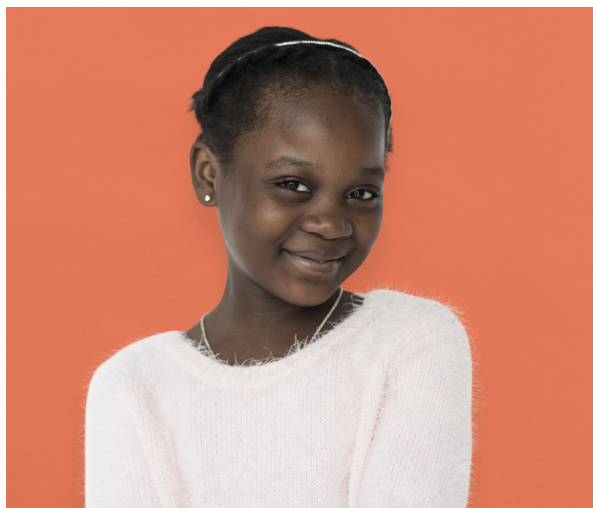
- Register your child with an association or the playground with language support.
- On the first floor of the library, you will find the Taalpunt Nederlands (Dutch language point) with study books and reading books in simple language.
- Attend Babbelonië. Babbelonië is where Dutch-language speakers and foreign-language speakers meet. In small groups we talk about everyday things.

Do you want to know more about Babbelonië? Go to www.babbelonia.be or follow us on Facebook for more information on the sessions, locations, and times.

Babbelonië live: takes place at the BIB every Friday
from 09:00 through 11:00, Graanmarkt 12, 9400 Ninove.

Babbelonië online: every Tuesday evening from 19:00 through 21:00.





Wil je dit boekje in een andere taal? Surf dan naar:
<https://www.ninove.be/brochure-onderwijs-in-ninove>
(of scan de QR code).